

SIXTH MEDITERRANEAN COMBUSTION SYMPOSIUM**A. Author* and B. Author****

e-mail of principal author

*Address of A. Author (Authors)

**Address of B. Author (Authors)

Abstract

This paper demonstrates the format for papers for the Sixth Mediterranean Combustion Symposium. The purpose is to help in the production of a high quality proceedings volume. Your paper must be submitted in this format. This paragraph demonstrates the format for the paper abstract that cannot exceed one page.

Font, Layout, and Margins

Papers must be written in English. Papers must be set in a Times New Roman type font. The maximum paper length is twelve (12) pages. All figures and tables have to be included in the twelve page limit.

The title of the paper and the author's names and address(es) must be centered and at the top of the first page. The title should be in 16 point font, bold-faced, italicized and in "Title Case" (upper case letters as used above). In the header above the title, the conference name, location, and date should be given in 12 point, italicized, bold font, as shown above. This should appear on the title page only. The author's name(s) should be in 12 point font and bold-faced. Next line should show the e-mail address of the author to whom correspondence should be directed, in 12 point font and bold-faced. Address(es) should also be in 12 point font and bold-faced. There should be one blank line between the title and the author's name(s).

A short abstract (300 words or less) should follow the address(es) as shown above. There should be one blank line between the address(es) and the abstract. The heading "Abstract" should be 12 point boldface and aligned to the left. The abstract should be 12 point font and one column, the full width of the margins. The abstract should state the most important specific objectives, the major results, and the most significant conclusions of the paper.

The size of the page has to be 21 cm x 29.7 cm (A4) in portrait format. The text must be set in one column with a 12 point font. *Font sizes less than 12 points will not be accepted.* The column should be 160 mm wide, with 2.5 cm right and left margins. Upper and lower margins have to be 2.0 cm and 3.0 cm, respectively. Text, figures, and tables should be centered on the page, left-to-right and top-to-bottom.

Headings of sections within the paper should be bold-faced and aligned to the left of the column. The text should begin on the next line after a heading. There should be one blank line between the end of one section and the heading of the next section. Paragraphs should begin with 6.6 mm (approximately 3 letters in 12 point type) indentation and should be fully justified. Hyphenation should be used to make word spacing as uniform as possible.

Page Numbers, Binding, and Submission

Page numbers should not be included. Papers have to be submitted in electronic format by e-mail to mcs6@irc.cnr.it before March 1, 2009. Please note that this will be a strict deadline, and papers received later will not be included in the Book of Abstract and in the CD-ROM.

Authors using MS-Word as word processors can submit the .doc file, or the complete and ready to be processed .tex file, strictly following the format described here and a PDF file of their paper. Authors using other processors will have to provide a PDF or PostScript version of their papers.

Figures and Tables

Figures and tables should be numbered separately, and the order in which they appear should correspond to the order in which they are referenced. The word "Figure" and its number and the word "Table" and its number should appear in bold faced Times type font of 12 point size, followed by a period, followed by a caption in normal 12 point font, as illustrated in by the figure and table in this document. Captions should be centered. The word "Figure" may be abbreviated in the text but not in the figure caption. The word "Table" should not be abbreviated. *See* Figs. 1 and 2 and Table 1 in this document for examples. Figures and tables should appear in portrait format whenever possible.

Figures and tables may appear in the text as they occur. The labels, symbols and other information on the illustrations should have minimum size corresponding to a 12 point Times New Roman font when printed.

Table 1. Example of a table.

Column 1	Column 2	Column 3
1	2	3
4	5	6
7	8	9

Authors are encouraged to include as much information as possible in the captions to avoid excessive clutter in their Figures and Tables. Because conference proceedings will be printed in the Proceedings Book in black and white, and also included in a CD-ROM. Color figures are discouraged if they are not clear when printed in black and white.

Units

Please use SI units.

Equations

Equations should be centered, with the equation number in parentheses in sequential order included right-justified, as in the below equation,

$$F = ma. \tag{1}$$

Equations should be separated from text by one line, and may be referred to by equation number. All symbols should be printed in italics or otherwise according to conventional practice, both in the equations and in the text. An example of how italics and equation numbers should be used is given here in referring to the force *F* in above.

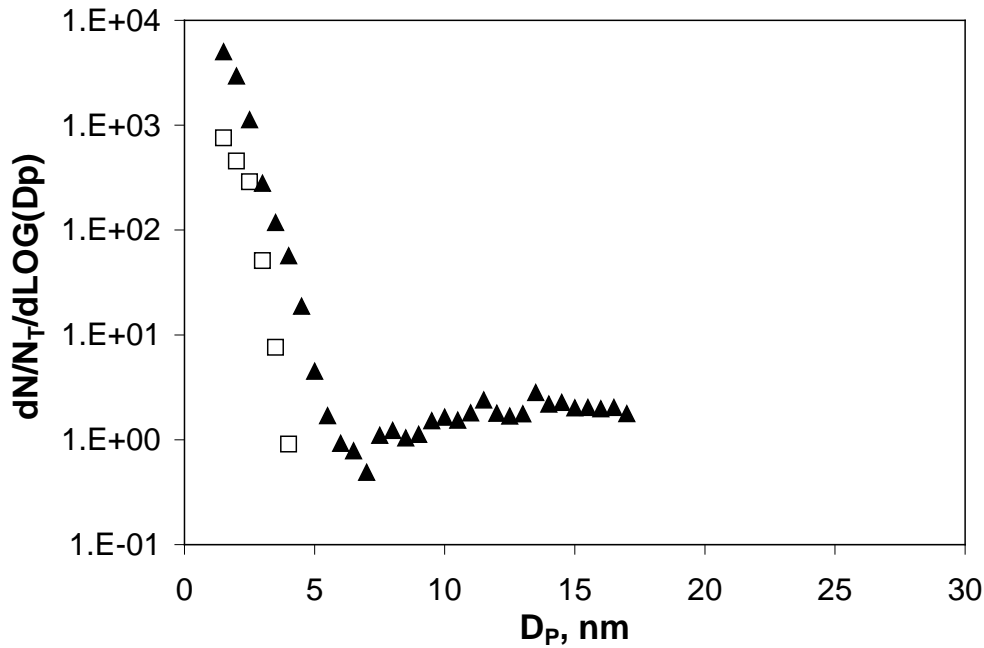


Figure 1. Example of a figure.

Nomenclature

If symbols are used extensively, a nomenclature section should be included. Use standard symbols for quantities whenever possible, for example D_{pq} for droplet diameters or σ for surface tension. The nomenclature section should begin with English symbols first in alphabetic order, followed by Greek and other symbols. For Greek and other non-standard characters, the TrueType Symbol font should be used. Subscripts and superscripts should be listed in separate sections. Acronyms and Abbreviations (A&A) should be indicated in parentheses at their first mentioning. The nomenclature section should immediately precede the references.

D_{32}	Sauter mean diameter
a	acceleration
F	force
m	mass
ρ	density

Subscripts

g	gas
l	liquid

Superscripts

+	downstream of the flame
-	upstream of the flame

References

References should be indicated in the text by full sized numbers enclosed within square brackets. Use different formats for journals [1], books [2], symposium proceedings [3], and internal reports [4], as illustrated in the examples below.

- [1] Rolando, A., Allouis, C., Beretta, F., D'Alessio, A., D'Anna, A., Minutolo, A., "Measurement of particulate volume fraction in a co-flow diffusion flame using transient thermocouple technique", *Comb. Sci. and Tech.* 176: 945-958 (2004)
- [2] Lefebvre, A.W., *Gas Turbine Combustion*, McGraw-Hill, 1983, p. 130.
- [3] Pitcher, G., Wigley, G., "Two component velocity and size measurements for a non-combusting fuel spray in a Diesel swirl combustion chamber", *Proc 10th International Conference on Liquid Atomisation and Spray Systems*, Rouen, France, paper VII-11, pp 766-773.
- [4] Alluis, C., Beretta, F., D'Alessio, A., Borghese, A., "Ultraviolet absorption and fluorescence measurements in turbulent spray flames", *Proc. Comb. Inst.* 28:311-317 (2000).